

2022_aktív hallgatói_angol

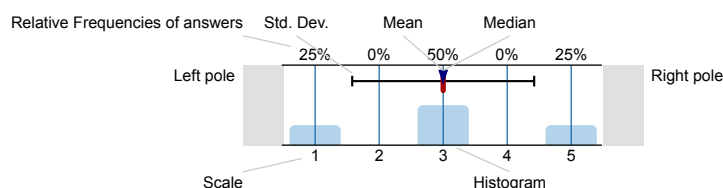
No. of responses = 724



Survey Results

Legend

Question text



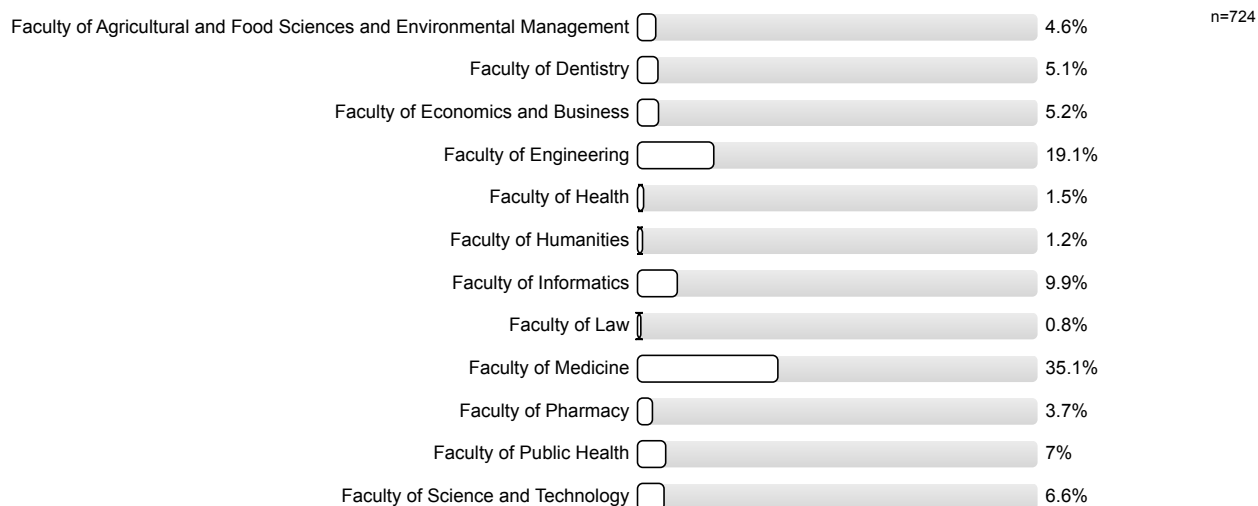
n=No. of responses
 av.=Mean
 md=Median
 dev.=Std. Dev.
 ab.=Abstention

1. General Questions

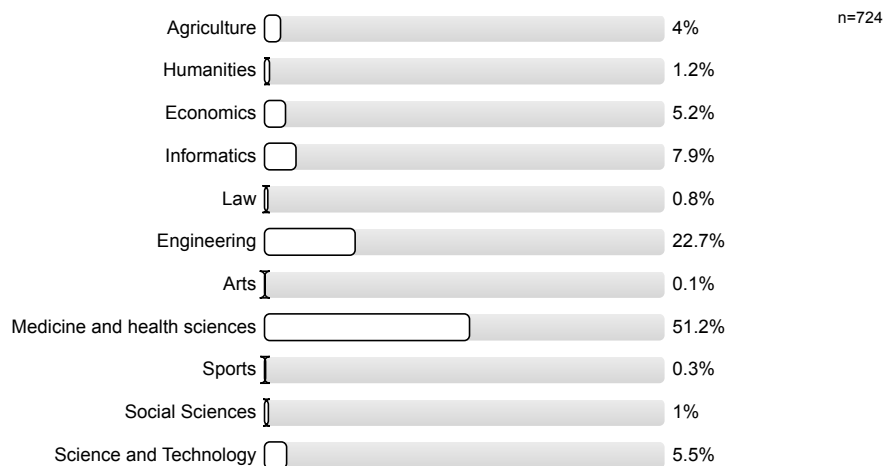
1.1) Sex:



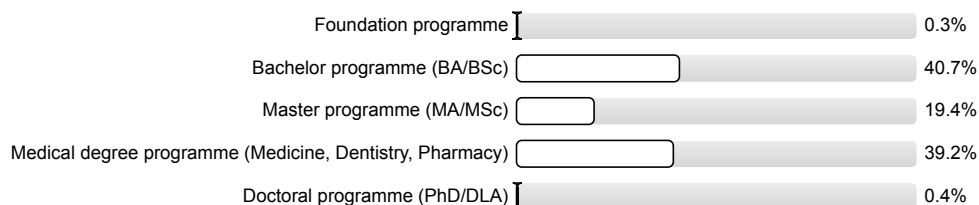
1.2) Which faculty of UD are you studying at? (If you do more than one training programmes simultaneously, choose the one you find the most important.)



1.3) What is the professional field of your chosen major?



1.4) What is the level of your training programme?

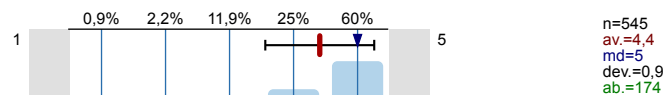


n=722

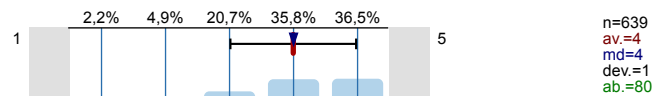
2. Importance of work-related competencies

Please rate how important you think the following competencies are. (1=not important at all; 2= not important; 3=somewhat important; 4=important; 5 = very important; 0= no opinion)

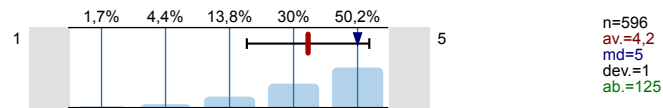
2.1) Proactive problem solving skills



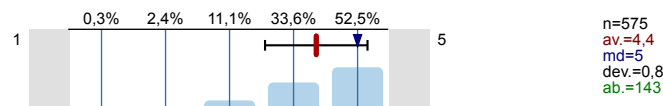
2.2) Aiming for perfection



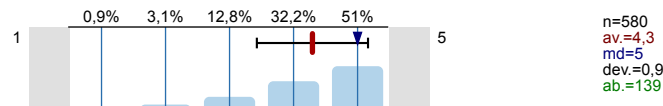
2.3) Teamwork



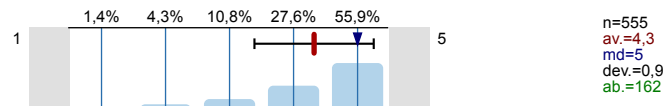
2.4) Persistence



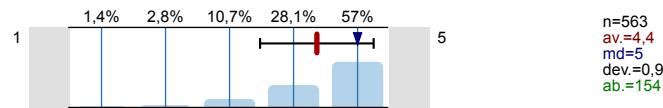
2.5) Ambition



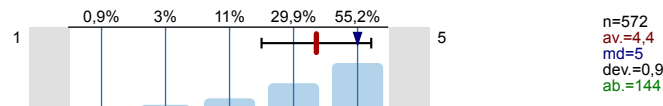
2.6) Communication skills



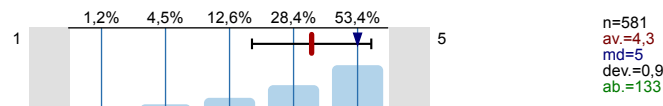
2.7) Self-confidence



2.8) Thirst for knowledge

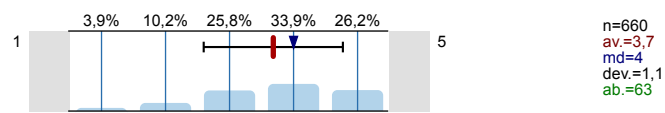
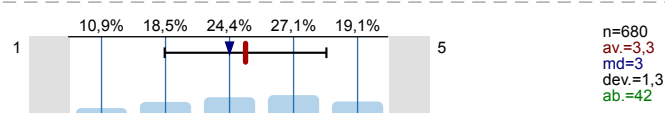
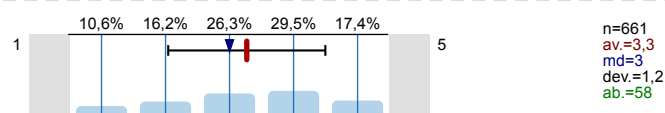
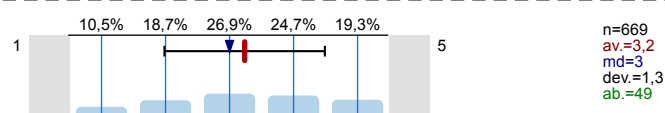
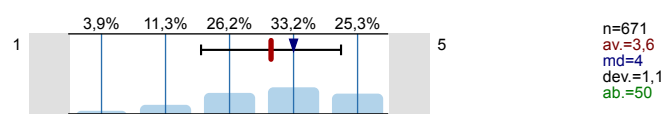
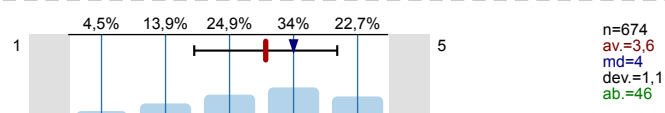


2.9) Organisation skills

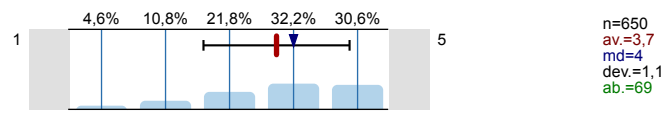
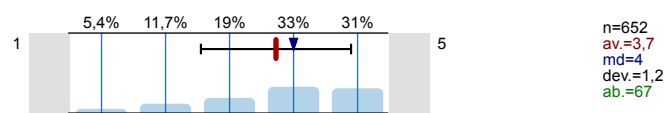


3. Satisfaction with the development of skills and knowledge

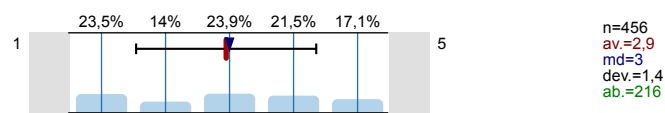
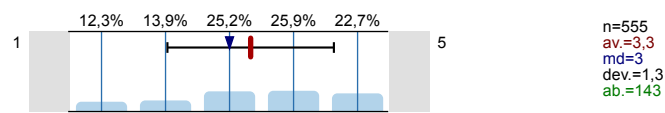
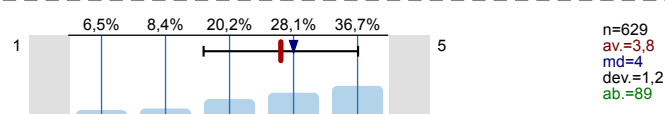
Please rate how satisfied you are with education and the development of the following skills and knowledge at your faculty. (1= not satisfied at all; 2=not satisfied; 3=somewhat satisfied; 4=satisfied; 5 = absolutely satisfied; 0=no opinion)

3.1) **theoretical proficiency**3.2) **practical proficiency**3.3) **computer skills**3.4) **language development**3.5) **usefulness of knowledge gained at the university**3.6) **(overall) quality of education****4. Infrastructure**

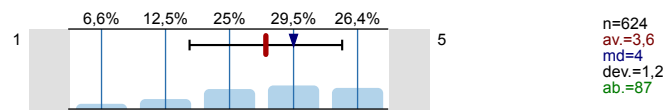
Please rate how satisfied you are with the following things. (1= not satisfied at all; 2=not satisfied; 3=somewhat satisfied; 4=rather satisfied; 5 = absolutely satisfied; 0=no opinion)

4.1) **equipment and facilities of education**4.2) **appearance and physical conditions of buildings****5. Services**

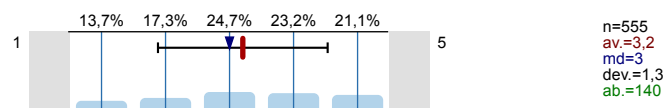
Please rate how satisfied you are with the following services. (1= not satisfied at all; 2=not satisfied; 3=somewhat satisfied; 4= rather satisfied; 5 = absolutely satisfied; 0=no opinion)

5.1) **Dorm-related services**5.2) **Sports-related services**5.3) **Student Service Centre/ Education Office/ International Office/Coordinating Centre for International Education**

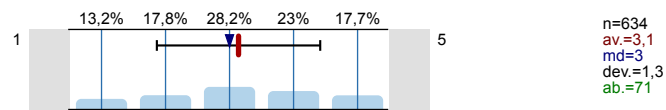
5.4) Department/Institute Administration



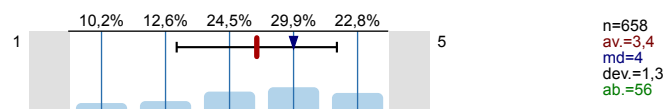
5.5) Not education-related consultancy



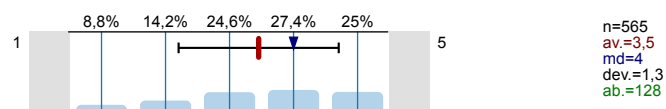
5.6) Getting to know how the faculties work



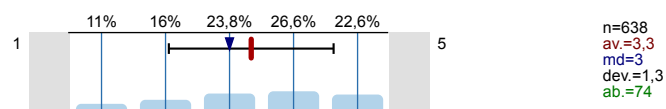
5.7) Your faculty



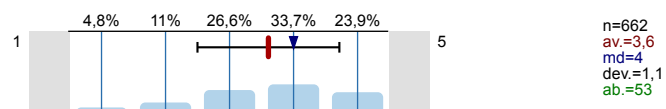
5.8) Sports facilities?



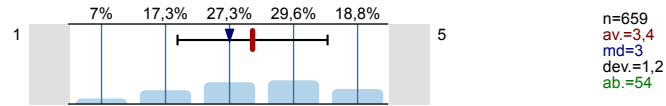
5.9) Contacting instructors/professors outside the classrooms?



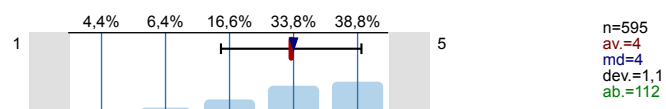
5.10) Education?



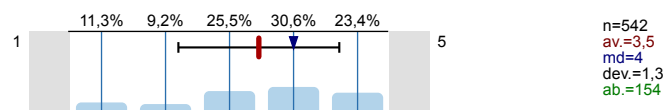
5.11) The organisation of education?



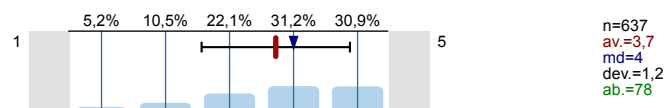
5.12) Library services?



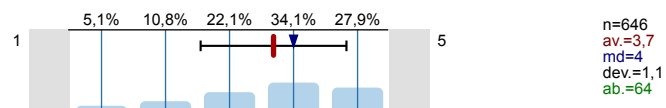
5.13) UD's Facebook appearance?



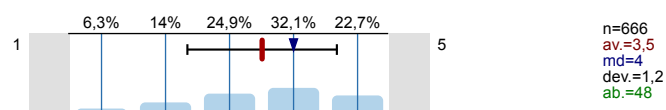
5.14) Online availability of learning materials?



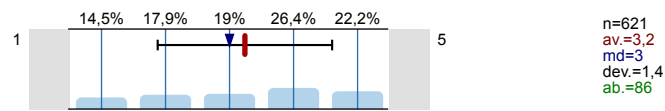
5.15) To what extent is the environment supporting study?



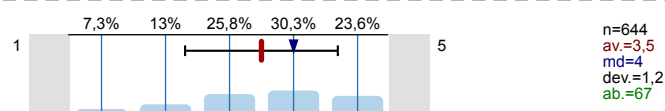
5.16) Considering student life, to what extent are you satisfied with relations among students?



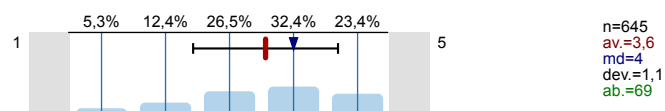
5.17) Considering student life, to what extent are you satisfied with ISU (International Student Union)?



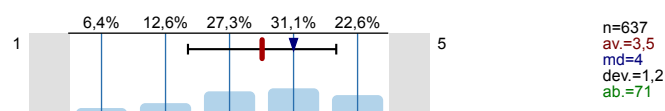
5.18) Considering education administration, to what extent are you satisfied with the helpfulness of administrators?



5.19) Considering education administration, to what extent are you satisfied with printed and electronic information communication?



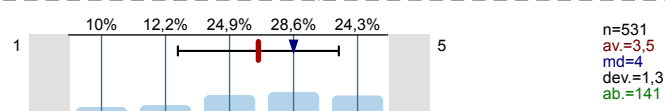
5.20) To what extent are you satisfied with education-related administration?



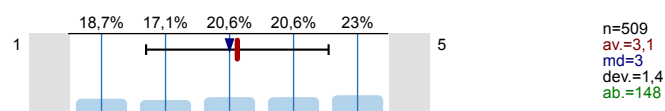
6. Professional Practice

How would you rate the following statements related to your professional practice (if there is any):

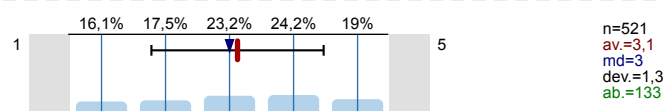
6.1) I have learned many new things during my professional practice.



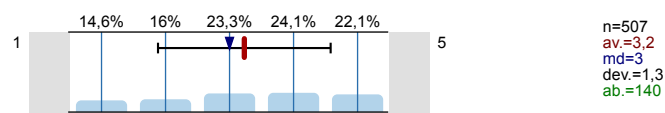
6.2) I would love to work at the place where I did my professional practice.



6.3) I have gained real work experience during my professional practice.



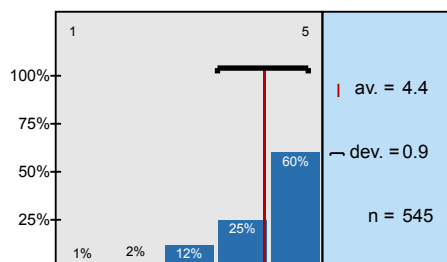
6.4) My instructors/professors helped me a lot during my professional practice.



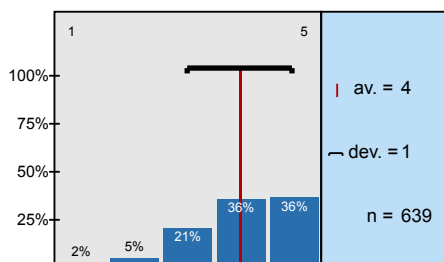
Thank you for completing our survey! You can submit your answers by clicking on "Send." Saving your data may take a few seconds depending on Internet speed. Please wait for the message verifying that your data is saved.

Histogram for scaled questions

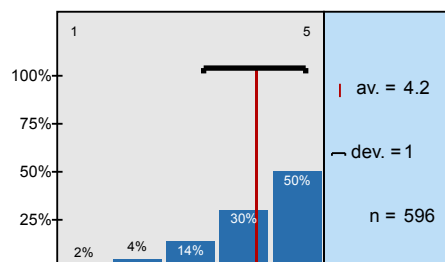
Proactive problem solving skills



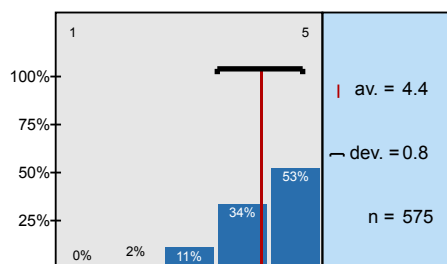
Aiming for perfection



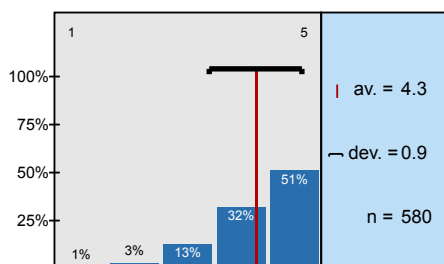
Teamwork



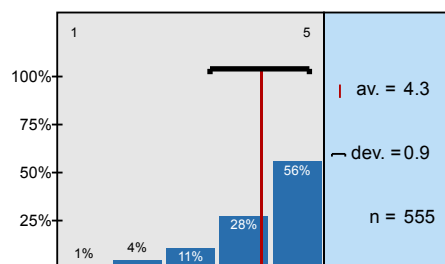
Persistence



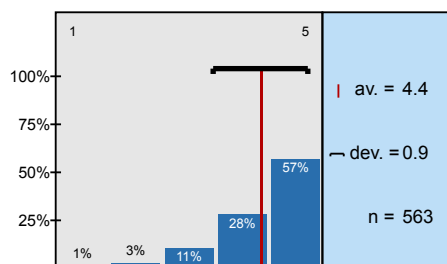
Ambition



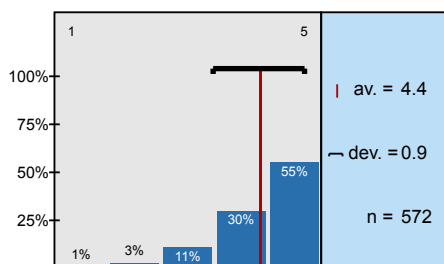
Communication skills



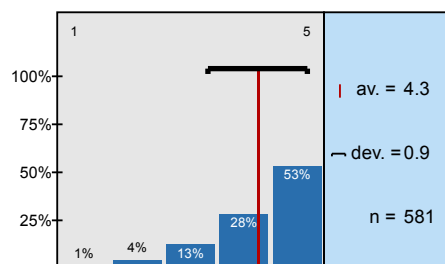
Self-confidence



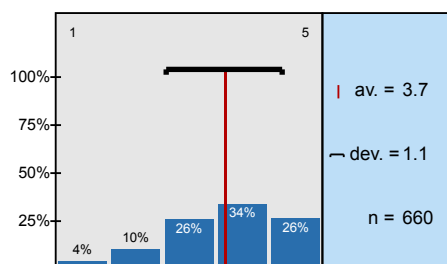
Thirst for knowledge



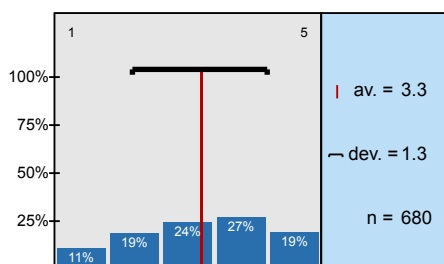
Organisation skills



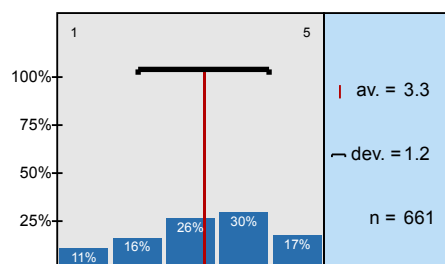
theoretical proficiency



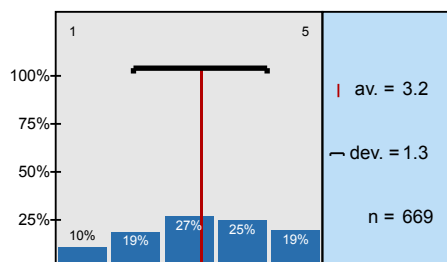
practical proficiency



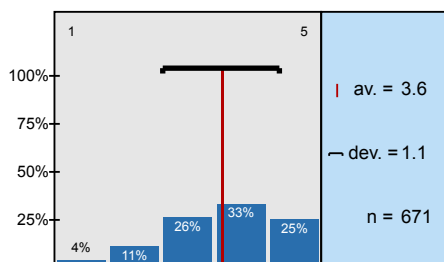
computer skills



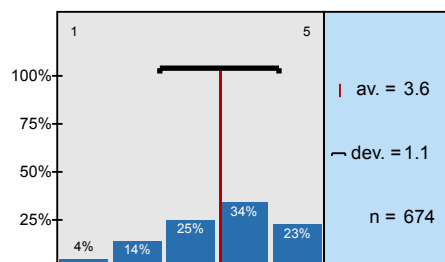
language development

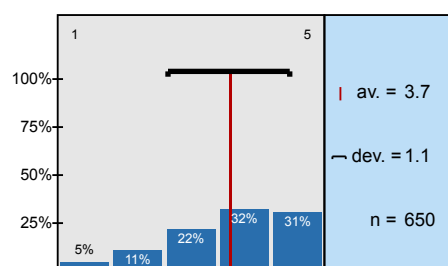
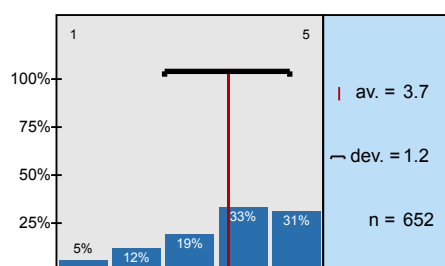
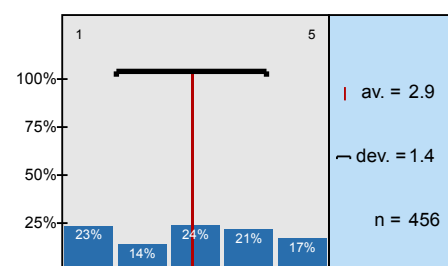
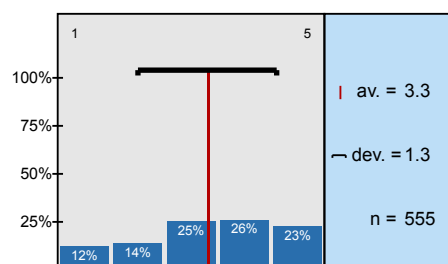
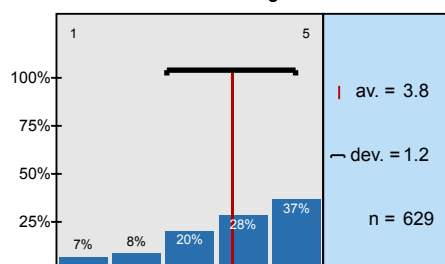
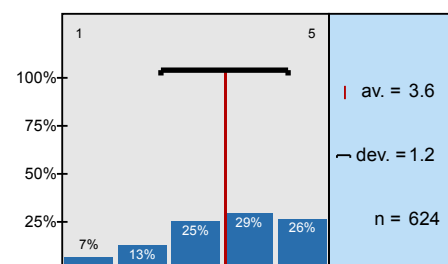
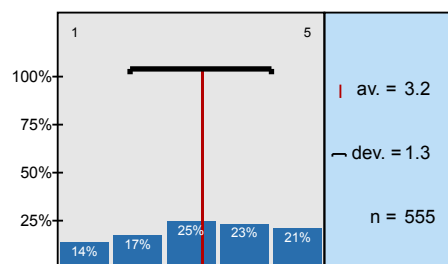
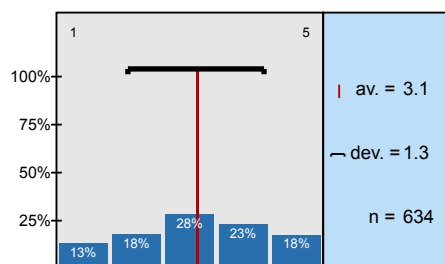
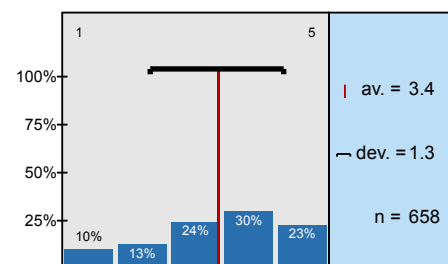
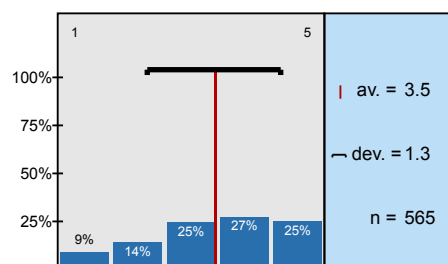
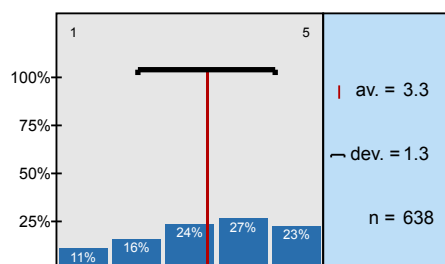
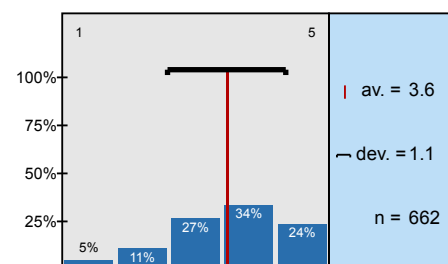
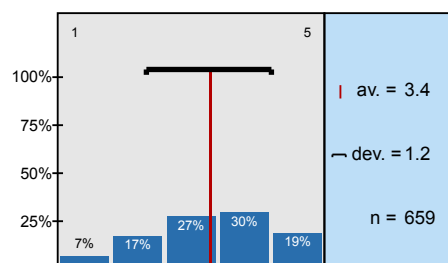
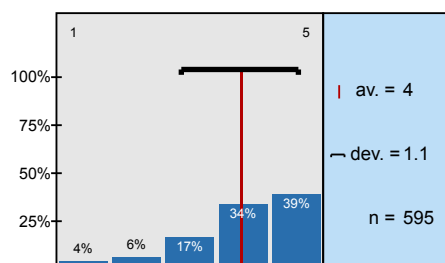
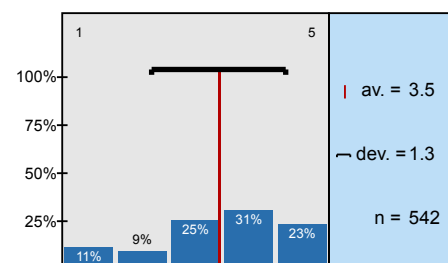


usefulness of knowledge gained at the university

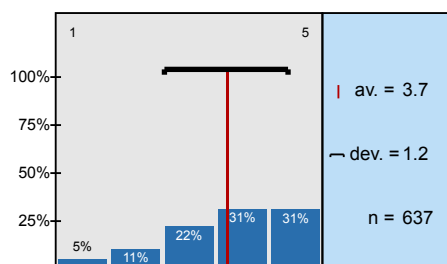


(overall) quality of education

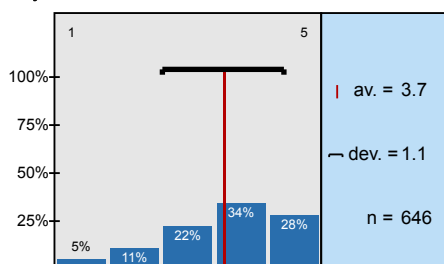


equipment and facilities of education**appearance and physical conditions of buildings****Dorm-related services****Sports-related services****Student Service Centre/ Education Office/ International Office/Coordinating Centre for****Department/Institute Administration****Not education-related consultancy****Getting to know how the faculties work****Your faculty****Sports facilities?****Contacting instructors/professors outside the classrooms?****Education?****The organisation of education?****Library services?****UD's Facebook appearance?**

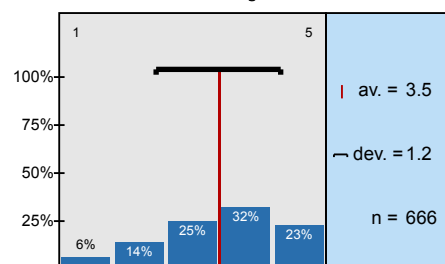
Online availability of learning materials?



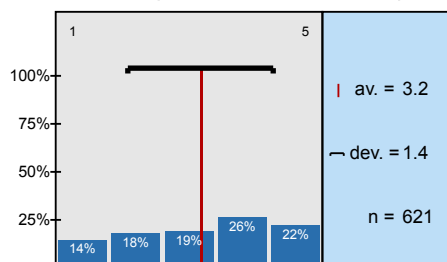
To what extent is the environment supporting study?



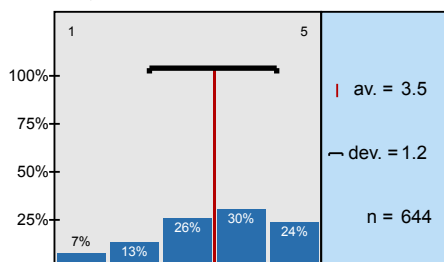
Considering student life, to what extent are you satisfied with relations among students?



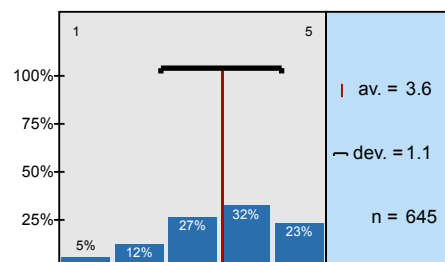
Considering student life, to what extent are you satisfied with ISU (International Student Union)?



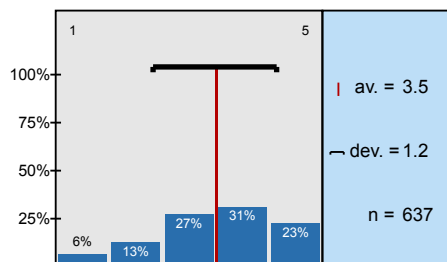
Considering education administration, to what extent are you satisfied with the helpfulness of



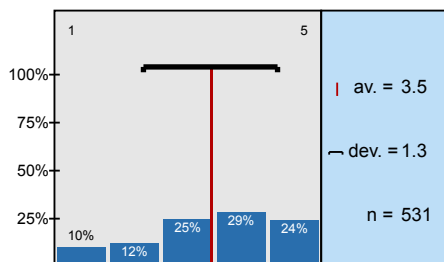
Considering education administration, to what extent are you satisfied with printed and electronic



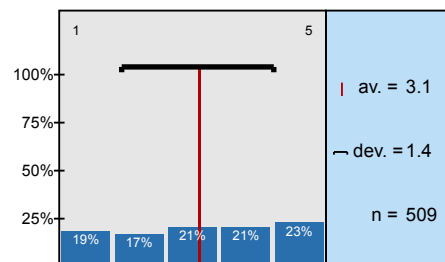
To what extent are you satisfied with education-related administration?



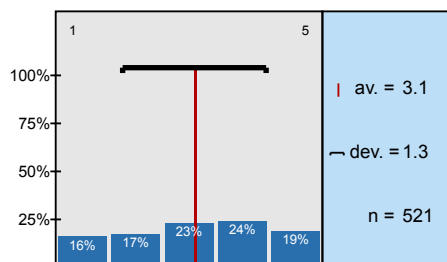
I have learned many new things during my professional practice.



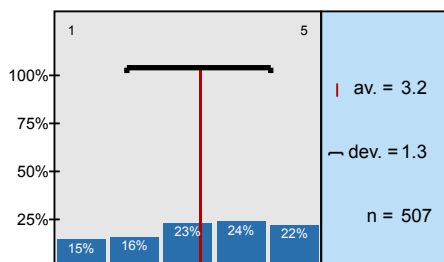
I would love to work at the place where I did my professional practice.



I have gained real work experience during my professional practice.



My instructors/professors helped me a lot during my professional practice.



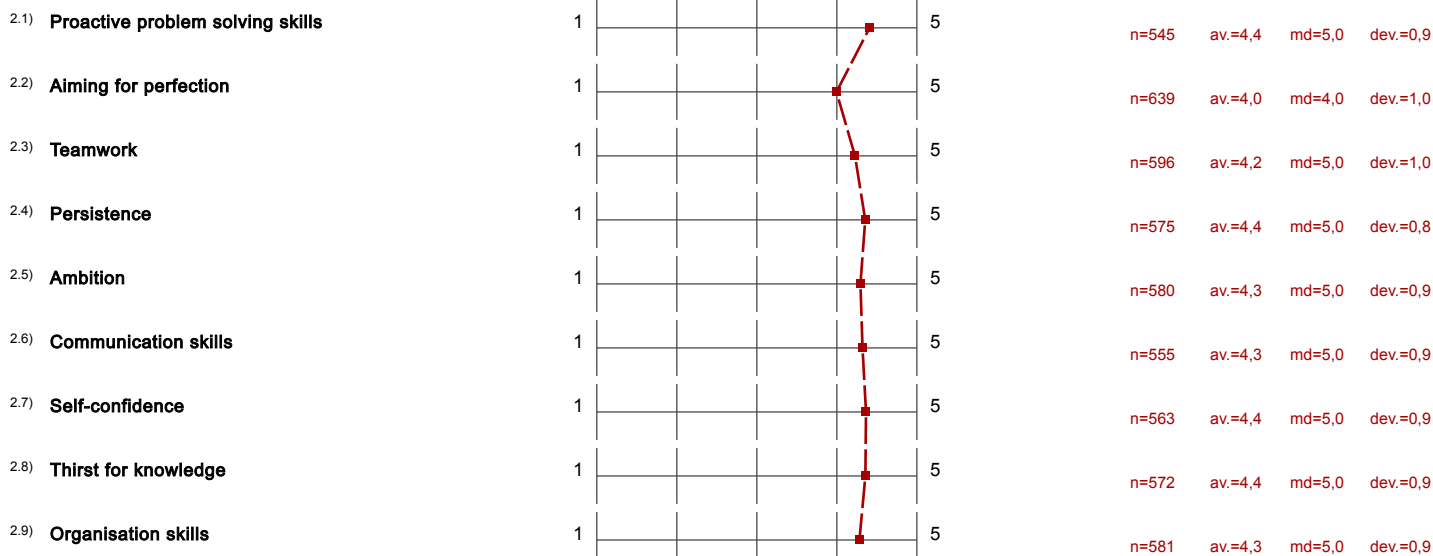
Profile



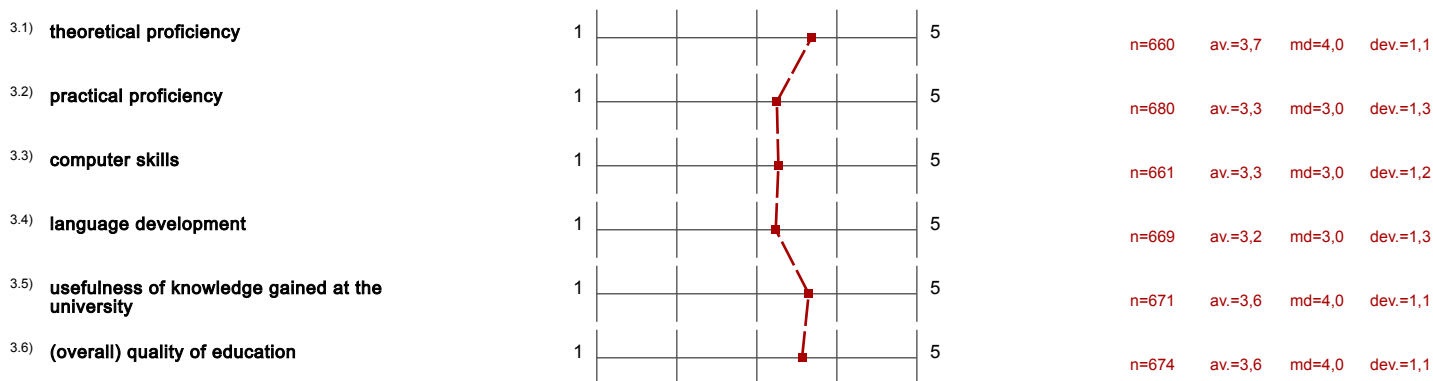
Compilation: 2022_aktív hallgatói_angol

Values used in the profile line: Mean

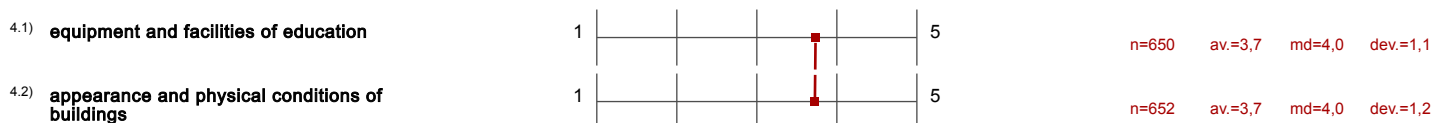
2. Importance of work-related competencies



3. Satisfaction with the development of skills and knowledge



4. Infrastructure



5. Services



5.2) Sports-related services	1					5	n=555	av.=3,3	md=3,0	dev.=1,3
5.3) Student Service Centre/ Education Office/ International Office/Coordinating Centre for International Education	1					5	n=629	av.=3,8	md=4,0	dev.=1,2
5.4) Department/Institute Administration	1					5	n=624	av.=3,6	md=4,0	dev.=1,2
5.5) Not education-related consultancy	1					5	n=555	av.=3,2	md=3,0	dev.=1,3
5.6) Getting to know how the faculties work	1					5	n=634	av.=3,1	md=3,0	dev.=1,3
5.7) Your faculty	1					5	n=658	av.=3,4	md=4,0	dev.=1,3
5.8) Sports facilities?	1					5	n=565	av.=3,5	md=4,0	dev.=1,3
5.9) Contacting instructors/professors outside the classrooms?	1					5	n=638	av.=3,3	md=3,0	dev.=1,3
5.10) Education?	1					5	n=662	av.=3,6	md=4,0	dev.=1,1
5.11) The organisation of education?	1					5	n=659	av.=3,4	md=3,0	dev.=1,2
5.12) Library services?	1					5	n=595	av.=4,0	md=4,0	dev.=1,1
5.13) UD's Facebook appearance?	1					5	n=542	av.=3,5	md=4,0	dev.=1,3
5.14) Online availability of learning materials?	1					5	n=637	av.=3,7	md=4,0	dev.=1,2
5.15) To what extent is the environment supporting study?	1					5	n=646	av.=3,7	md=4,0	dev.=1,1
5.16) Considering student life, to what extent are you satisfied with relations among students?	1					5	n=666	av.=3,5	md=4,0	dev.=1,2
5.17) Considering student life, to what extent are you satisfied with ISU (International Student Union)?	1					5	n=621	av.=3,2	md=3,0	dev.=1,4
5.18) Considering education administration, to what extent are you satisfied with the helpfulness of administrators?	1					5	n=644	av.=3,5	md=4,0	dev.=1,2
5.19) Considering education administration, to what extent are you satisfied with printed and electronic information communication?	1					5	n=645	av.=3,6	md=4,0	dev.=1,1
5.20) To what extent are you satisfied with education-related administration?	1					5	n=637	av.=3,5	md=4,0	dev.=1,2

6. Professional Practice

6.1) I have learned many new things during my professional practice.	1					5	n=531	av.=3,5	md=4,0	dev.=1,3
6.2) I would love to work at the place where I did my professional practice.	1					5	n=509	av.=3,1	md=3,0	dev.=1,4
6.3) I have gained real work experience during my professional practice.	1					5	n=521	av.=3,1	md=3,0	dev.=1,3
6.4) My instructors/professors helped me a lot during my professional practice.	1					5	n=507	av.=3,2	md=3,0	dev.=1,3